

Biomedical Freezers



**Superior Temperature
Uniformity**



**Compact Footprint
with Large Capacity**



**High-Efficiency and Energy-Saving
Compressor and System**

Haier Medical & Laboratory Solutions America LLC

Website: www.haiermedical-usa.com

Jun, 2026

Haier Biomedical
Intelligent Protection of Life Science



Haier Biomedical
USA



Haier Biomedical
International



Haier Biomedical
International



Haier Biomedical
International



Haier Biomedical
International

Exterior View



Interior View



Product Advantages



Superior Temperature Uniformity

The temperature uniformity is $\pm 3^{\circ}\text{C}$ at key characteristic points.



Green and Environmental Friendly

Hydrocarbon refrigerant, energy saving and environmental protection, built with LBA foam insulation, complies with European RoHS requirements.



Microprocessor Controller

Microprocessor control, with temperature display precision at 0.1°C .



Porthole

Standard access port (25mm diameter), which is convenient for user to test cabinet temperature.



High-efficiency and Energy-saving Compressor and System

High efficiency hydrocarbon compressor, optimized refrigeration system and low power consumption.



Multiple Alarm Functions

High/Low temperature, door ajar, power failure, sensor error, high ambient temperature alarms and also equipped with remote alarm interface, alarm modes are audible and visible.



Compact Footprint

Combine a small footprint with large storage capacity to provide flexible, reliable and convenient sample storage.



Undercounter Biomedical Freezer

The DW-25L92 cabinet is designed with a height of 810mm, which can be easily placed under the bench to save storage space.



Low Sound Level

Sound-reducing design with optimized system eliminates high-pitch noise to reduce sound level and deliver a smoother operation.



Standard LED Display Panel

Optional: 10-inch touchscreen for DW-30L818BP/DW-40L818BP/DW-40L959BP.

► Specifications

Model		DW-25L92	DW-25L262	DW-30L528D	DW-30L698	
Technical Data	Cabinet Type	Upright	Upright	Upright(double door)	Upright	
	Ambient Temperature (°C)	10-32	10-32	10-32	10-32	
	Cooling Type	Direct Cooling	Direct Cooling	Direct cooling	Direct cooling	
	Defrost Mode	Manual	Manual	Manual	Manual	
	Refrigerant	HC	HC	HC	HC	
	Sound Level (dB(A))	28	34	43	43	
Performance	Cooling Performance (°C)	-25	-25	-30	-30	
	Temperature Range (°C)	-10~-25	-10~-25	-10~-30	-10~-30	
Control	Controller	Microprocessor	Microprocessor	Microprocessor	Microprocessor	
	Display	LCD	LCD	LCD	LED	
Electrical Data	Power Supply (V/Hz)	115/60	115/60	115/60	115/60	
	Power (W)	125	135	420	500	
Dimensions	Capacity (L/Cu.Ft)		92/3.2	262/9.3	531/18.8	698/24.7
	Net/Gross Weight (approx)	kg	46/51	88/93	180/205	180/225
		lbs	101.4/112.4	194.0/205.0	396.8/451.9	396.8/496
	Interior Dimensions (W×D×H)	mm	435×410×635	480×465×1430	704×620×1230	640×755×1458
		in	17.1×16.1×25.0	18.9×18.3×56.3	27.7×24.4×48.4	25.2×29.7×57.4
	Exterior Dimensions (W×D×H)	mm	640×610×810	700×705×1730	940×845×1878	874×930×1984
		in	25.2×24.0×31.9	27.6×27.8×68.1	37.0×33.3×73.9	34.4×36.6×78.1
	Packing Dimensions (W×D×H)	mm	660×700×910	775×760×1880	1005×940×2040	950×1060×2110
		in	26.0×27.6×35.8	30.5×29.9×74.0	39.6×37.0×80.3	37.4×41.7×83.1
	Container Load (20'/40'/40'H)		48/102/102	21/45/45	10/22/24	10/22/22
Alarms	High/Low Temperature	Y	Y	Y	Y	
	Remote Alarm	Y	Y	Y	Y	
	Power Failure	Y	Y	Y	Y	
	Sensor Error	Y	Y	Y	Y	
	Low Battery	N/A	N/A	N/A	Y	
	High Ambient Temperature	Y	Y	Y	Y	
	Dirty Condenser	N/A	N/A	N/A	N/A	
	Door Ajar	Y	Y	Y	Y	
Accessories	Casters	Y(4)	Y(4)	Y(4)	Y(4)	
	Leveling Feet	Y(2)	N/A	Y(2)	Y(2)	
	Porthole	Y, 1×left side, (25mm)diameter	Y, 1×left side, (25mm)diameter	Y, 1×left side, 1×right side, (25mm)diameter	Y, 2×rear, (25mm)diameter	
	Inner Doors	N/A	N/A	N/A	3	
	Drawers	3- plastic drawers	7- plastic drawers	10- plastic drawers, optional	24- plastic blood bag drawers, optional	
	Shelves	N/A	N/A	3- adjustable wire shelves	5- adjustable wire shelves	
	Shelf Dimensions (W×D)(mm)	N/A	N/A	680×537	610×655	
	Max. Load per Shelf (kg)	N/A	N/A	37	40	
	USB Interface	Optional	Optional	Optional	Y	
	RS485	Optional	Optional	Optional	Optional	
	NFC	N/A	N/A	N/A	N/A	
	Temperature Recorder	N/A	N/A	Optional	Optional	
	Others	Certificate	UL	UL	UL	UL, ENERGY STAR

*Haier Biomedical reserves the right to change products and specifications without prior notice.

Specifications

Model		DW-30L818BP	DW-40L818BP	DW-40L959BP	
Technical Data	Cabinet Type	Upright	Upright	Upright	
	Ambient Temperature (°C)	10-32	10-32	10-32	
	Cooling Type	Direct cooling	Direct cooling	Direct cooling	
	Defrost Mode	Manual	Manual	Manual	
	Refrigerant	HC	HC	HC	
	Sound Level (dB(A))	37	44	42	
Performance	Cooling Performance (°C)	-30	-40	-40	
	Temperature Range (°C)	-10--30	-20--40	-20--40	
Control	Controller	Microprocessor	Microprocessor	Microprocessor	
	Display	LED	LED	LED	
Electrical Data	Power Supply (V/Hz)	100-230/50/60	100-230/50/60	100-230/50/60	
	Power (W)	680	795	800	
Dimensions	Capacity (L/Cu.Ft)	818/28.9	818/28.9	959/33.9	
	Net/Gross Weight (approx)	kg	251/287	210/240	350/400
		lbs	553.4/632.7	463.0/529.1	771.6/881.8
	Interior Dimensions (W×D×H)	mm	750×755×1460	750×755×1460	1016×716×1310
		in	29.5×29.7×57.5	29.5×29.7×57.5	40.0×28.2×51.6
	Exterior Dimensions (W×D×H)	mm	988×951×1980	988×951×1980	1296×998×1980
		in	38.9×37.4×78.0	38.9×37.4×78.0	51.0×39.3×78.0
	Packing Dimensions (W×D×H)	mm	1040×1035×2110	1040×1035×2110	1358×1098×2127
in		40.9×40.7×83.1	40.9×40.7×83.1	53.5×43.2×83.7	
Container Load (20'/40'/40'H)		10/22/22	10/22/22	8/16/16	
Alarms	High/Low Temperature	Y	Y	Y	
	Remote Alarm	Y	Y	Y	
	Power Failure	Y	Y	Y	
	Sensor Error	Y	Y	Y	
	Low Battery	Y	Y	Y	
	High Ambient Temperature	Y	Y	Y	
	Dirty Condenser	N/A	N/A	N/A	
	Door Ajar	Y	Y	Y	
Accessories	Casters	Y(4)	Y(4)	Y(4)	
	Leveling Feet	Y(2)	Y(2)	Y(2)	
	Porthole	Y, 2×rear, (25mm)diameter	Y, 2×rear, (25mm)diameter	Y, 2×rear, (25mm)diameter	
	Inner Doors	3	3	3	
	Drawers	30- plastic blood bag drawers, optional	30- plastic blood bag drawers, optional	21/42- plastic blood bag drawers, optional	
	Shelves	5- adjustable wire shelves	5- adjustable wire shelves	2- adjustable wire shelves	
	Shelf Dimensions (W×D)(mm)	706×665	706×665	1000×641	
	Max. Load per Shelf (kg)	50	50	65	
	USB Interface	Optional	Optional	Optional	
	RS485	Y	Y	Y	
	NFC	Optional	Optional	Optional	
	Temperature Recorder	Optional	Optional	Optional	
Others	Certificate	UL, ENERGY STAR	UL	UL	

*Haier Biomedical reserves the right to change products and specifications without prior notice.

► Exterior and Interior View



DW-30L350F

► Product Advantages



Automatic Defrost Design

Automatic air-cooled defrosting technology minimizes frost accumulation, eliminating the need for frequent manual defrosting and ensuring continuous, hassle-free operation



Forced-Air Cooling

A forced air circulation system ensures rapid temperature recovery after door openings, minimizing fluctuations to protect sample integrity



High Energy Efficiency

Equipped with an inverter compressor and an optimized refrigeration system, it delivers exceptional energy savings and consistent performance



Microprocessor-Controlled System

Precision temperature controller with a microprocessor, featuring a -30°C to -10°C temperature range and 0.1°C display accuracy



Fast Temperature Recovery

Rapid temperature recovery after a 1-minute door opening, over 10% higher efficiency than direct cooling, ensuring optimal protection of samples



Eco-Friendly & Sustainable

Hydrocarbon refrigerant and non-toxic, eco-friendly insulation materials for a sustainable, low-carbon footprint



Multiple Alarm Functions

Including high/low temperature alarm, sensor error alarm, power failure alarm, low battery alarm, door ajar alarm, high ambient temperature alarm, condenser dirty alarm. Alarm mode is sound and flash



Superior Temperature Uniformity

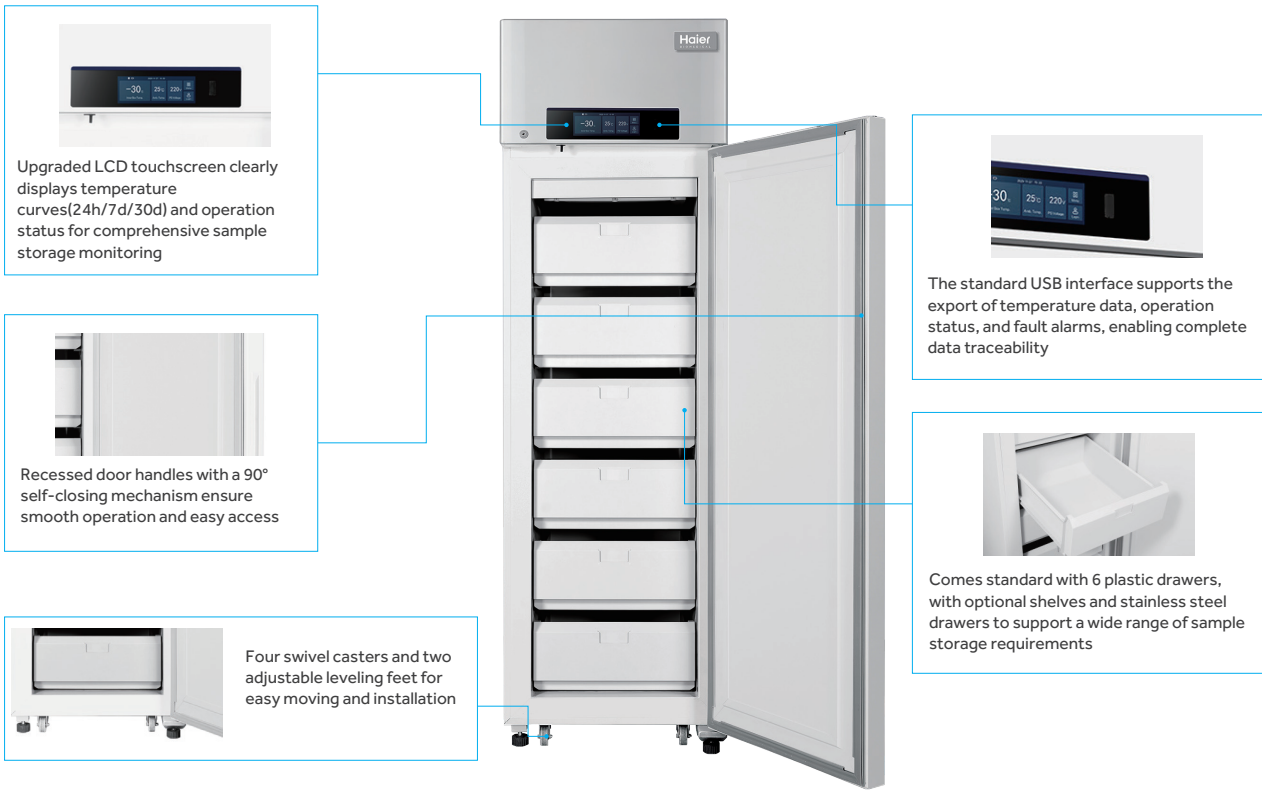
At a set temperature of -30°C, the empty-chamber temperature uniformity is maintained at $\pm 2^{\circ}\text{C}$, and during defrosting, it is maintained at $\leq \pm 5^{\circ}\text{C}$, ensuring a highly stable sample storage environment



Rich Configurations

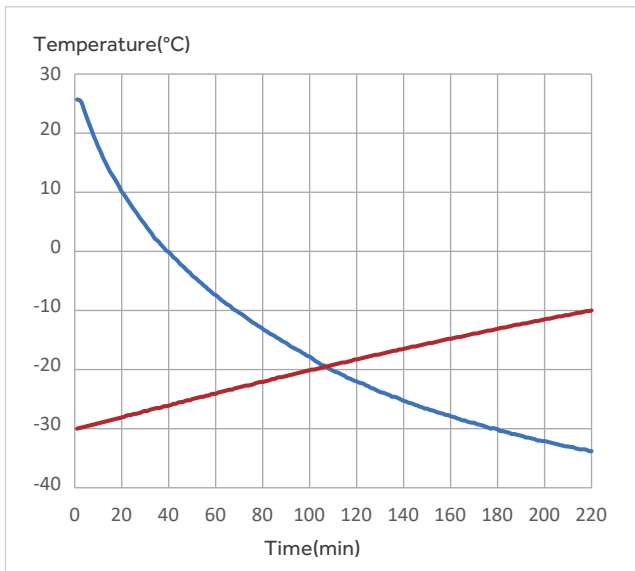
Standard: Touchscreen, USB, RS485, plastic drawers
Optional: Blood bag drawers, stainless steel inner liner, stainless steel drawers, shelves

► **Ergonomic Design**

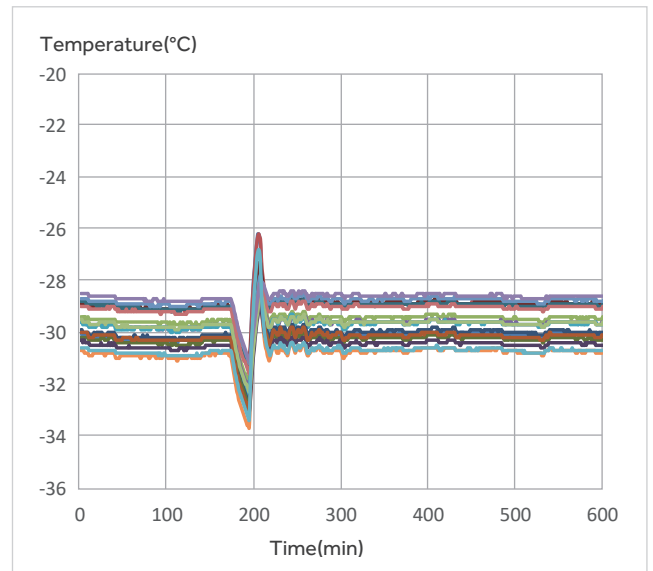


► **Performance Curve**

— Pull-down
— Pull-up



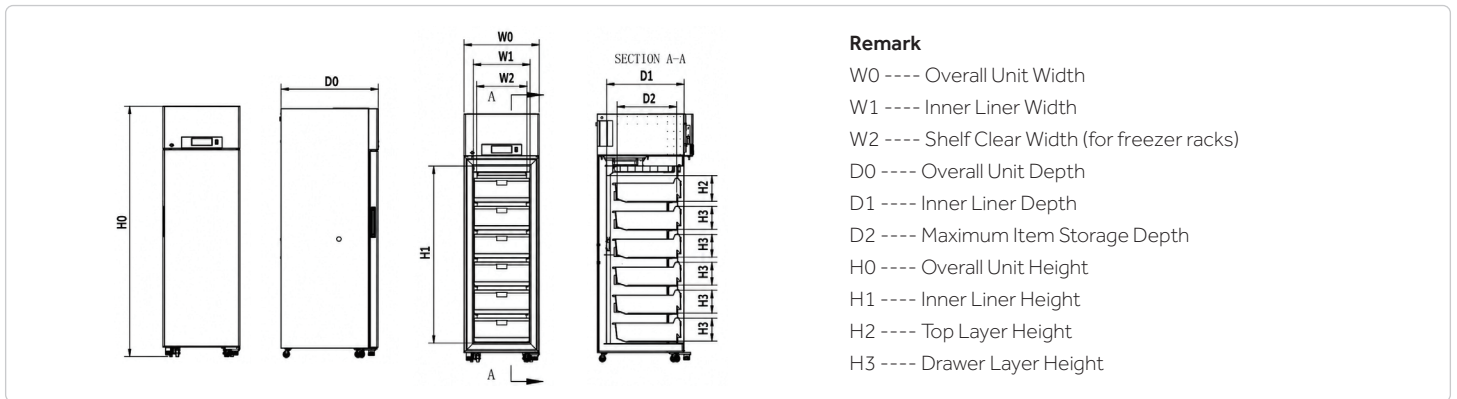
Pull-down & Pull-up Curve



Temperature Uniformity Curve
(Including Defrost Cycle)

Ambient Temp: 25°C | Set Point: -30°C | Empty Freezer Test

Product Dimensions



Model	Code	W0	W1	W2	D0	D1	D2	H0	H1	H2	H3
DW-30L350F		600mm	450mm	402mm	770mm	615mm	478mm	1965mm	1350mm	205mm	182mm

Specifications

Model		DW-30L350F	
Technical Data	Cabinet Type	Upright	
	Ambient Temperature (°C)	10~32	
	Cooling Type	Forced Air Cooling	
	Defrost Mode	Automatic Defrost	
	Refrigerant	HC	
	Sound Level (dB(A))	41	
Performance	Cooling Performance (°C)	-30	
	Temperature Range (°C)	-10~-30	
Control	Controller	Microprocessor	
	Display	LCD	
Electrical Data	Power Supply (V/Hz)	115/60	
	Power (W)	395	
Dimensions	Capacity (L/Cu.Ft)	350/12.4	
	Net/Gross Weight (approx)	kg	130/150
		lbs	286.6/330.7
	Interior Dimension (W×D×H)	mm	450×615×1350
		in	17.7×24.2×53.1
	Exterior Dimension (W×D×H)	mm	600×770×1965
in		23.6×30.3×77.4	
Packing Dimension (W×D×H)	mm	900×1000×2100	
	in	35.4×39.4×82.7	
Alarms	High/Low Temperature	Y	
	Remote Alarm	Y	
	Power Failure	Y	
	Sensor Error	Y	
	Low Battery	Y	
	High Ambient Temperature	Y	
	Dirty Condenser	Y	
	Door Ajar	Y	
Accessories	Casters	Y(4)	
	Leveling Feet	Y(2)	
	Porthole	Y, 1×left side, 1×right side, (25mm)diameter	
	Inner Doors	N/A	
	Drawers	6- plastic drawers	
	Shelves	Optional	
	USB Interface	Y	
	RS485	Y	
	NFC	N/A	
	Temperature Recorder	N/A	
	Certifications	UL, ENERGY STAR	

