



YFXDG500



Protection & Alarm System



Safe and ECO-friendly



Mobile & IOT

Medical Waste Disposal Workstation

Scope of Application

The medical waste disposal workstation (YFXDG500) is dedicated to the treatment of medical waste within medium/small-scale hospitals, clinics, emergency places, and field hazardous treatment in the epidemic zone. Can be used to treat cotton swabs, cotton balls, disposable sanitary products, media, strains, specimens, culture medium, blood, and other infectious waste; Medical pillows, scalpels, surgical saws, sharps like the damaged glass pieces of the tube; Waste of human tissues, organs, cadavers, pathological wax pieces, and other pathological wax blocks. Not applicable to the treatment of pharmaceutical and chemical wastes.

The treated medical waste is converted into municipal waste. Volume of treated waste is reduced by 75% and weight by 20%

The Haier Biomedical Medical Waste Disposal Workstation complies with the "Technical Specifications for Centralized Treatment Engineering of Microwave Disinfection of Medical Waste (HJ 229—2021)" and the "Standard for Pollution Control on Medical Waste Treatment and Disposal (GB 39707—2020)".

Qingdao Haier Biomedical Co.,Ltd.

No.280 Feng Yuan Road, High-tech Zone,
Qingdao, 266109, P.R. China
Tel: +86-0532-88935593
E-mail: inquiry@haierbiomedical.com
Website: www.haiermedical.com



Haier Biomedical
International



Haier Biomedical
International



@haiermedicalint



Haier Biomedical
International



Haier Biomedical
International



Product Advantages



Mobile & IOT

- Reserved GPS+GDS positioning, double assurance
- Detailed process monitoring visualized data presentation and graphical process display



Safe and ECO-friendly

- No emission of harmful gases and waste water during disinfection
- Real-time monitoring of leakage of microwave disinfection unit



Protection & Alarm System

- It also has sound and light alarm
- Abnormal alarm and stop protection



High Efficient Sterilization

- Microwave + high temperature steam treatment for the double sterilization
- The killing rate of spores and other microorganisms enabled standard level of log6



Centimeter-level Grinding

- Adopt a high-intensity & wear-resistant blades
- Reachable crushing particle size within 2cm



High Specification of Automation

- PLC touch system, one-click operation
- It only takes one person to complete

Product Advantages

Chamber for the sterilization: medical waste crushing and sterilization warehouse

Heat dissipation hole: heat dissipation inside the machine

Built-in circuit module: switchgear source, communication interface, steam control, etc

Printer function: sterilization date, time, personnel, and other information paper records

Foot pad: Adjustable foot pad, adapted to diverse environment scenarios and various ground leveling for use

Gas exhaust port: After the gas inside the chamber is disinfected, it will discharged through this port

Audible and Flashing alarm: crusher, steam, microwave, hatch door, and other abnormal sound and light alarm

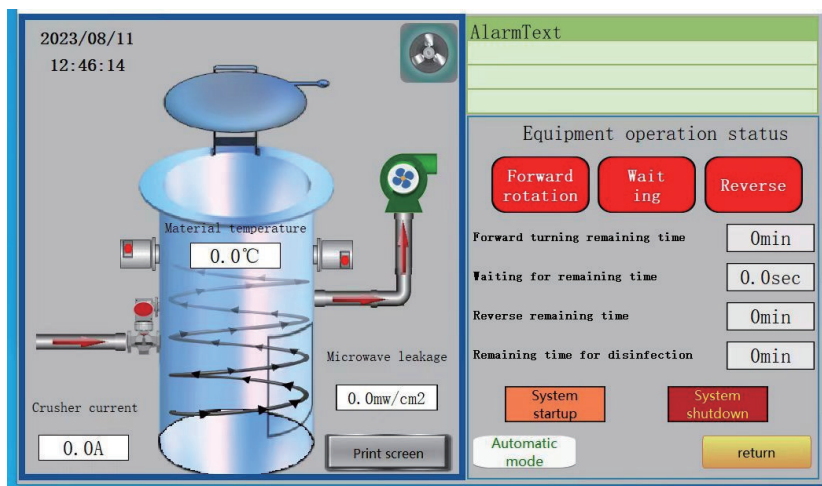
PLC control panel: LCD touch-screen panel, supporting manual & automatic control

Emergency stop button: emergency stop in abnormal conditions to protect the safety of the machine and personnel

Convenient-moveable waste treatment module: Medical waste can be transferred directly to the discharge bin after being crushed and disinfected



Control Mode



- Large LCD touch screen
- Fault & abnormal alarm
- Real-time display of operational status
- Record traceability and availability for frequent data collection
- Manual/automatic easily switching
- Smart IOT technology, remote digital accessibility support

Specifications



Model	Voltage (V)	Capacity/hr	Operation time	Capacity
YFXDG500	380V / 50Hz 60Hz	50KG	30min	250L
Crushing System	Power	Blade Quantity	Angular Velocity	Material
	7.5KW	>4	1200r/min	D550
Steam System	Power	Tank Volume	Power of Electric Heater	Vapor
	4KW	40L	6000h	5L/single
Sterilization System	Power	Microwave Generator Frequency	Quantity	Material
	>4.5KW	2.450±0.01GHz	≥3unit	≥304 stainless steel (upgradeable)

*Actual parameters are subject to change, please refer to the latest standard.