

Benchtop Low-Speed Centrifuge

Scope of Application:

It is widely used in fields such as life sciences, biology, medical research, pharmaceuticals, geology, agriculture and forestry, petrochemicals, light industry, and metal particles, for rapid separation and extraction of trace samples.

It also serves as IVD lab equipment for separating human blood, used in diagnostic tests like hematological, immunological screening, and cardiovascular assessment.



LX-60T100-J

Qingdao Haier Biomedical Technology Co., Ltd.

No.280 Feng Yuan Road, High-tech Zone,
Qingdao, 266111, P.R. China
E-mail: inquiry@haierbiomedical.com
Website: www.haiermedical.com



Haier Biomedical
International



Haier Biomedical
International



@haiermedicalint



Haier Biomedical
International



Haier Biomedical
International



Product Features



Offer a compact footprint and compatible with 5ml, 10ml, 15ml, 50ml or 100ml sample tube, small and large blood collection tubes



Use of brushless induction motors to provide maintenance-free operation, eliminating carbon particle emissions



Optimized sound design for low noise levels ($\leq 56\text{dB(A)}$)



Automatic rotor identification with over speed protection



Real time loading imbalance detection, immediate shutdown protection in case of imbalance

Intuitive Interface



LED keypad and control knob for easy operation, the wide viewing angle more comfortable and practical for users of all heights.



Quick recall of up to 99 programs for quick run start by routine users



9 acceleration + 10 deceleration stages



The speed, centrifugal force, time and temperature can be changed by user during the centrifugation process.

Target speed/centrifugal force/time and real-time operation data display



Screen lock function to prevent press errors

One key to recall stored programs for more convenient operation

Acceleration/Deceleration rates



Product Parts



Patented anti-seismic door lock.
In case of abnormal vibration, the cover can be locked reliably



Unique air duct structure design,
the heat inside the centrifugal chamber can dissipate quickly



Gas springs with safety protection



316 stainless steel centrifuge chamber is rust-free and easy to clean



Triple-layer construction to ensure safe use



Emergency lid release, pry out the white plastic plug on the side plate with a tool and pull the attached release cord to open the lid



Specifications

Model	Maximum Capacity	Speed Range (rpm)	Max RCF(xg)	Speed Accuracy (rpm)	Time Setting Range	Display	Noise Level (dB(A))	Power Supply (V/Hz)
LX-60T100-J	6*100ml	500-6,000	4,749	±10	1s-99h/59min (1s/1min increment)	LED	≤56	220-240/50/60

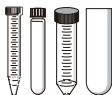





Power(W)	Exterior Dimensions (W*D*H)(mm)	Lid Opening Height (mm)	Net Weight (kg)	Packing Dimensions (W*D*H)(mm)	Gross Weight (kg)	Certifications
175	340*447*281	627	25	441*544*421	28	CE

Laboratory centrifuges contain fluorinated greenhouse gases in the sealing equipment.




Fixed-Angle Rotor



BE No.	BE11D6000	BE11D5000	BE11DT000	BE11D7000	BE12D6000	BE11DU000
Type	Steel sleeve	Steel sleeve	Steel sleeve	Steel sleeve	Steel sleeve	Steel sleeve
Max Capacity	6*50(15)ml	12*15ml 12*10ml	18*15ml	6*100ml	12*10ml	36*10ml
Max RCF (xg)	3,578	4,749	3,578	3,349	2,683	2,465
Max Speed (rpm)	5,000	6,000	5,000	4,800	5,000	4,200
Max Tubes Per Rotor	6 pcs(50ml) 6 pcs(15ml)	12	18	6	12	36
Tube						
Max Tube Capacity (ml)	50&15ml	15ml 10ml blood tube	15ml	100ml	10ml	10ml
Max Tube Dimensions (Ø x L mm)	29*118 17*121	17*121 16*106	17*121	41*120	15*106	15*106
Tube Type	Round/Conical bottom	Round/Conical bottom Large blood collection tube (Ø16mm)	Round/Conical bottom	Round bottom	Large blood collection tube (Ø15mm)	Large blood collection tube (Ø15mm)

Adapter(Sets of 50) for BE12D6000, BE11DU000

BE No.	BE12JN001
Max Capacity (ml)	5
Tube	
Max Tube Dimensions (Ø x L mm)	13*75
Tube Type	Small blood collection tube





Swing-Out Rotor



Swing-Out
Rotor Block



BE No. BE12F2001

Max. RCF (xg) 2,770

Max. speed (rpm) 4,200



Bucket
(Sets of 4)



BE No. BE12H8000

Max Capacity 1*15ml
2*10ml
2*5ml

Tubes per bucket/rotor 15ml(1/4), 10ml(2/8)
5ml(2/8)

Tube

**Max Tube Dimensions
(Ø x L mm)** 17*121
16*106
13*75

Tube Type 15ml(Conical bottom)
10ml/5ml(Round bottom)



Swing-Out
Rotor Block



BE No. BE12F2001

Max. RCF (xg) 2,770

Max. speed (rpm) 4,200



Bucket
(Sets of 4)



BE No. BE12H1000

Max Capacity 5*10ml

Tubes per bucket/rotor 5/20

Tube

**Max Tube Dimensions
(Ø x L mm)** 16*106

Tube Type Large blood
collection tube
(Ø16mm)

Adapter(Sets of 50) for BE12H1000

BE No. BE12JN001

Max Capacity (ml) 5

Tube

**Max Tube Dimensions
(Ø x L mm)** 13*75

Tube Type Small blood collection tube





Swing-Out Rotor



Swing-Out
Rotor Block




BE No.	BE12F2001
Max. RCF (xg)	2,770
Max. speed (rpm)	4,200



Bucket
(Sets of 4)



BE No.	BE12H2000
Max Capacity	2*15ml
Tubes per bucket/rotor	2/8
Tube	
Max Tube Dimensions (Ø x L mm)	17*121
Tube Type	Conical bottom



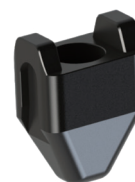
Swing-Out
Rotor Block




BE No.	BE12F2001
Max. RCF (xg)	2,770
Max. speed (rpm)	4,200



Bucket
(Sets of 4)



BE No.	BE12H3000
Max Capacity	1*50ml
Tubes per bucket/rotor	1/4
Tube	
Max Tube Dimensions (Ø x L mm)	29*118
Tube Type	Conical bottom



Swing-Out Rotor

BE No.	BE12F3001
Max. RCF (xg)	2,130
Max. speed (rpm)	4,200
Max Capacity	2 plates
Bucket Type	Rectangular bottom

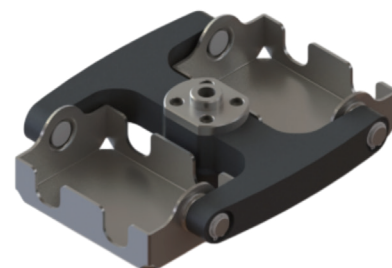
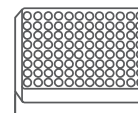
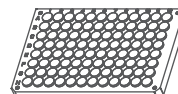
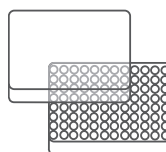
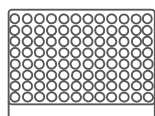


Plate Swing-Out Rotor

Plates for
BE12F3001



Plates per rotor	2	2	2	2
W*D*H (mm)	128*86*15	128*86*17.5	128*86*20	128*86*44.5
Plate Type	MTP (without lid)	MTP (with lid)	PCR plate 96-fold	DWP