

Pharmacy Refrigerator



Glass and solid door models available

HYC-85GD/FD



Noise Level



Energy Consumption



Reversible Door Hinge

Scope of Application

Used for storage of medicines, vaccines, reagents, biological products and other items that require a temperature between 2-8°C in hospitals, pharmacies, pharmaceutical factories, clinics and laboratories etc.

Innovative Design

- Magnetic gasket for positive seal
- Multiple alarms for safer monitoring
- Microprocessor controller, display with resolution of 0.1°C

Qingdao Haier Biomedical Co.,Ltd.

No.280 Feng Yuan Road, High-tech Zone,
Qingdao, 266109, P.R. China
E-mail: inquiry@haierbiomedical.com
Website: www.haiermedical.com



Haier Biomedical
International



Haier Biomedical
International



@haiermedicalint



Haier Biomedical
International



Haier Biomedical
International

Product Advantages



Eco-friendly hydrocarbon refrigerant (R600a) and CFC-free polyurethane insulation for reduced global warming



Optional USB and RS485, easy to export temperature data



Excellent performance: temperature uniformity $\leq 1.5^{\circ}\text{C}$ ①



Quiet operation: 35dB (A)



User reversible door hinge

* ① Tested by TUV according to DIN13277



HYC-85GD:

Intelligent anti-condensation: triple-paned tempered glass door with door frame heater, effectively reduces condensation even at 32°C, 80% RH ambient temperature

HYC-85FD:

CFC-free solid door, highly effective insulation



Hermetically sealed compressor, forced-air circulation and automatic defrost to ensure high cooling performance



Microprocessor controller, display with resolution of 0.1°C

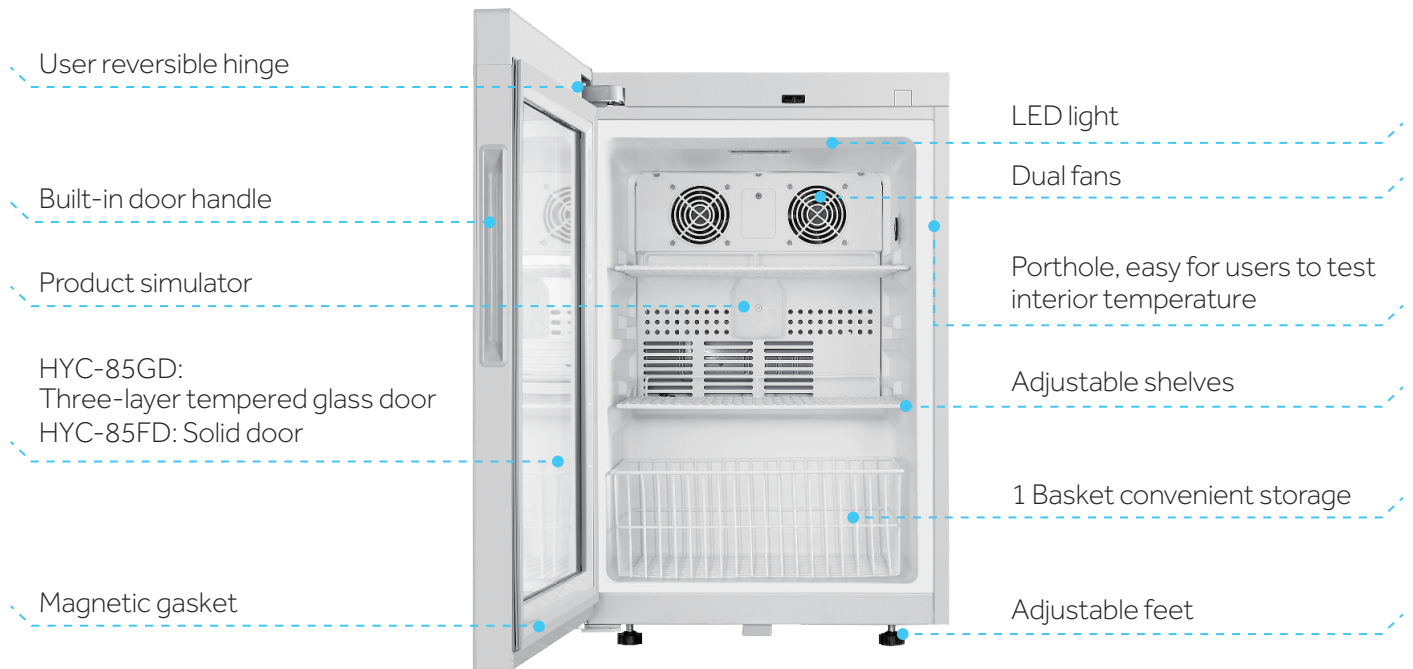


Multiple alarms for safer monitoring

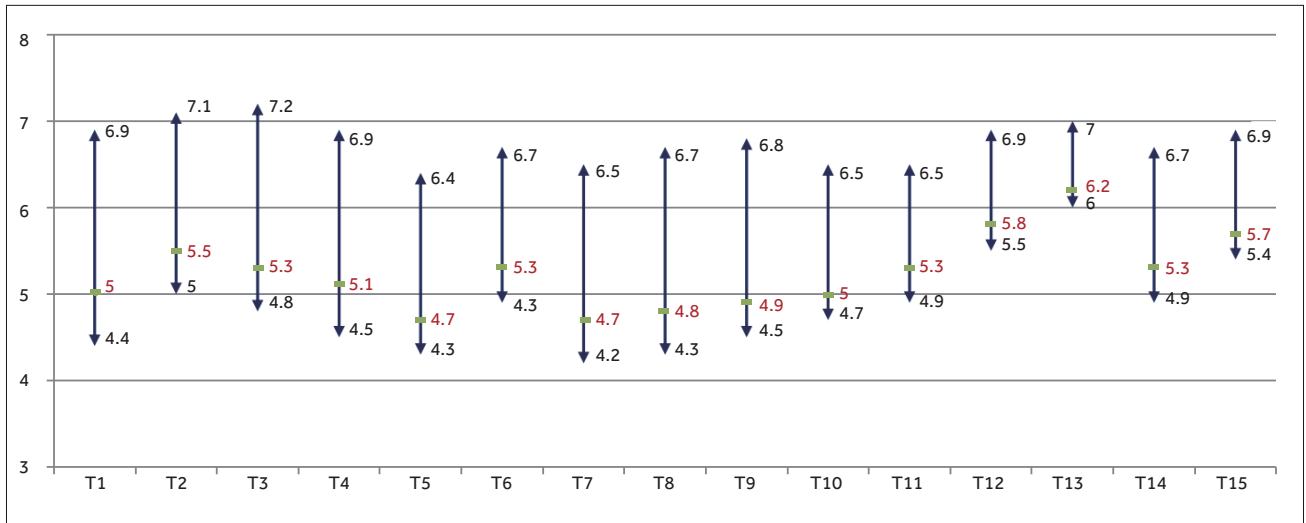


Magnetic gasket for positive seal

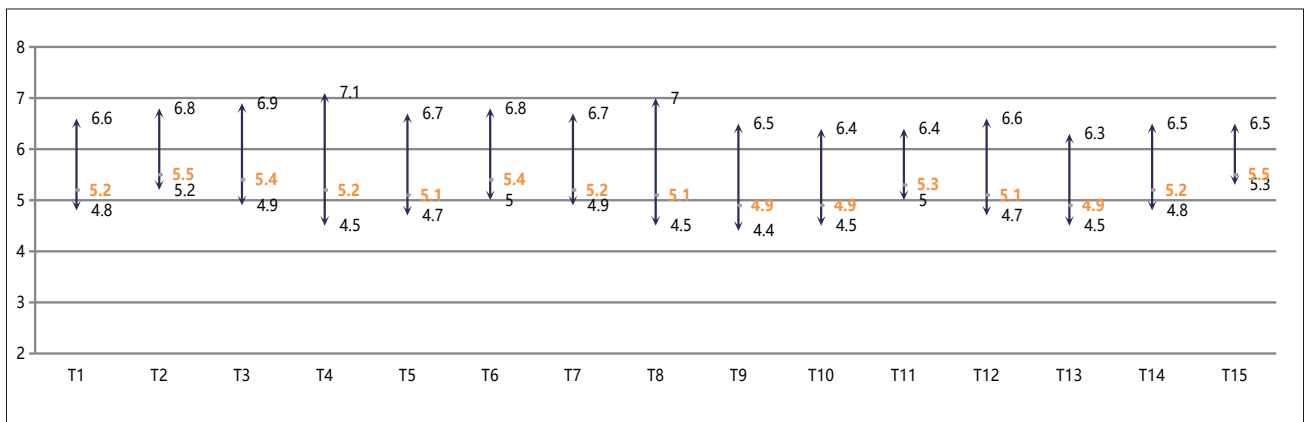
Product Parts



Cabinet Temperature



HYC-85GD



HYC-85FD

■ Average ⇅ Extended Measurement Uncertainty

* Tested by TUV according to DIN13277 (Ambient Temperature: 25°C Setpoint: 5°C Unloaded)

Specifications



Model		HYC-85GD	HYC-85FD	
Technical Data	Cabinet Type	Counter-Top / Under-Counter, Glass Door	Counter -Top / Under-Counter, Solid Door	
	Climate Class (°C)	N, 16-32	N, 16-32	
	Cooling Type	Forced Air Cooling	Forced Air Cooling	
	Defrost Mode	Auto	Auto	
	Refrigerant	R600a	R600a	
	Sound Level (dB(A))	35	35	
Performance	Temperature Range (°C)	2-8	2-8	
Control	Will the fan stop automatically when opening the door	Y	Y	
	Controller	Microprocessor	Microprocessor	
	Display	LED	LED	
Electrical Data	Power Supply (V/Hz)	220-240/50	220-240/50	
	Electrical Current (A)	0.98	0.98	
Performance Characteristics	Temperature Sensor	NTC	NTC	
	Power Consumption (kWh/24h)	0.99	0.5	
Dimensions	Capacity (L/Cu.Ft)	85/3.0	85/3.0	
	Net/Gross Weight(approx)	kg	36 / 41	33 / 38
		lbs	79.4 / 90.4	72.8 / 83.9
	Interior Dimensions (W*D*H)	mm	405*405*555	405*405*555
		in	15.9*15.9*21.9	15.9*15.9*21.9
	Exterior Dimensions (W*D*H)	mm	495*550*740	495*550*740
		in	19.5*21.7*29.1	19.5*21.7*29.1
	Packing Dimensions (W*D*H)	mm	590*650*830	590*650*830
in		23.2*25.6*32.7	23.2*25.6*32.7	
	Container Load (20'/40'/40'H)	54/120/180	54/120/180	
Alarms	High/Low Temperature	Y	Y	
	High Ambient Temperature	Y	Y	
	Door Ajar	Y	Y	
	Power Failure	Y	Y	
	Low Battery	Y	Y	
	Sensor Error	Y	Y	
	Communication Failure	Y	Y	
	Condenser Heat	N	N	
	Remote Alarm	Y	Y	
	Audible and Visual Alarm	Y	Y	
Accessories	Caster	2	2	
	Foot	2	2	
	Porthole	1	1	
	Shelves/Basket	2/1	2/1	
	Printer	N/A	N/A	
	Chart Recorder	N/A	N/A	
	USB Interface	Optional	Optional	
	RS485	Optional	Optional	
Material	Exterior Material	Painted Steel	Painted Steel	
	Interior Material	Polystyrene	Polystyrene	
	Door Thickness (mm)	50	50	
	Cabinet Thickness (mm)	45	45	
	Shelves Material	Steel Wire, Coated with Plastic	Steel Wire, Coated with Plastic	
	Refrigerant Model	R600a, 45g	R600a, 45g	
Other	Certification	CE, UKCA, DIN13277 (Optional)	CE, UKCA, DIN13277 (Optional)	