

Benchtop High-Speed Refrigerated Centrifuge

LX-185T100R



Scope of Application :

It is widely used in fields such as life sciences, biology, medical research, pharmaceuticals, geology, agriculture and forestry, petrochemicals, light industry, and metal particles, for rapid separation and extraction of trace samples. It also serves as IVD lab equipment for separating human blood, used in diagnostic tests like hematological, immunological screening, and cardiovascular assessment.



Wide range of rotors for application flexibility



Short pre-cooling time and precise temperature control performance



Optimized sound design for low noise levels ($\leq 52\text{dB(A)}$)

Qingdao Haier Biomedical Technology Co., Ltd.

No.280 Feng Yuan Road, High-tech Zone,
Qingdao, 266111, P.R. China
E-mail: inquiry@haierbiomedical.com
Website: www.haiermedical.com



Haier Biomedical
International



Haier Biomedical
International



@haiermedicalint



Haier Biomedical
International



Haier Biomedical
International



Product Features



Wide range of rotors for application flexibility, compatible with tubes/bottles from 0.2 ml to 100ml



Short pre-cooling time and precise temperature control performance



Fast sample processing at maximum speeds of up to 18,500 rpm (30,130xg)



Use of brushless induction motors to provide maintenance-free operation, eliminating carbon particle emissions



Optimized sound design for low noise levels ($\leq 52\text{dB(A)}$)



Automatic radio-frequency rotor identification (RFID) with over speed protection



Each rotor use frequency monitoring to guarantee maximum operational safety



Real time loading imbalance detection, immediate shutdown protection in case of imbalance

Intuitive Interface



The 7-inch 45° glove-friendly touchscreen, the wide viewing angle more comfortable and practical for users of all heights



Further enhanced with access controls such as user login with password protection, the independent program data of each user is managed separately



Quick recall of up to 1000+ programs with alpha-numeric naming to minimize time between runs and for quick run start by routine users



The speed, centrifugal force, time and temperature can be changed by user during the centrifugation process



9 acceleration + 10 deceleration stages

Acceleration/
Deceleration
setting.

Target speed/
centrifugal force
and real-time
speed display.



Temperature set-point
and real-time temperature
display.

Quick access to stored
programs. 1000+ program
storage, supports customized
programs for convenient.

Clear one-touch buttons for fast refrigeration,
fast centrifugation,
intelligent start-stop and lid-closing status.



Product Parts



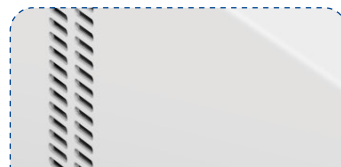
Intelligent lid locking monitoring and automatic self-locking to ensure safe operation



Motorized gas springs with safety protection



Drainage tray to prevent internal water accumulation and improve corrosion resistance



Triple-layer construction to ensure safe use



316 stainless steel centrifuge chamber is rust-free and easy to clean



Emergency lid release, pry out the white plastic plug on the side plate with a tool and pull the attached release cord at least 7 times to open the lid



USB port for exporting operation record including speed, time and temperature, operation curve with alarm messages etc



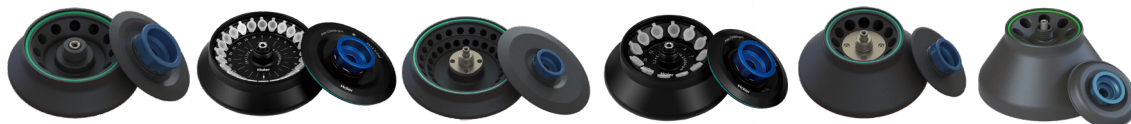
Specifications




Model	Maximum Capacity	Speed Range (rpm)	Max RCF(xg)	Speed Accuracy (rpm)	Time Setting Range	Precooling Function	Temperature Setting Range(°C)	Display
LX-185T100R	6*100ml	500~18,500	30,130	±10	1s~99h59m59s (1-second increment)	Yes	-20~40 adjustable to 1	7 inch touch screen

Noise Level (dB(A))	Power Supply (V/Hz)	Power(W)	Exterior Dimensions (W*D*H)(mm)	Lid Opening Height(mm)	Net Weight (kg)	Packing Dimensions (W*D*H)(mm)	Gross Weight(kg)	Certifications
≤52	220-240/50/60	1200	420*680*330	860	57	508*806*528	73	CE



Fixed-Angle Rotor






BE No.	BE12DKZ00	BE12C6000	BE12CB000	BE12DJZ00	BE12CC000	BE12CA000
Type	Sealed	Sealed	Sealed	Sealed	Sealed	Sealed
Max Capacity	12*1.5/2ml	24*1.5/2ml	48*1.5/2ml	12*5ml	12*10ml	8*15ml
Max RCF (xg)	25,636	30,130	19,083	20,124	15,547	14,972
Max Speed (rpm)	18,500	17,500	13,000	15,000	12,500	12,000
Tubes per Rotor	12	24	48	12	12	8
Tube						
Max Tube Capacity (ml)	1.5/2ml	1.5/2ml	1.5/2ml	5ml	10ml	15ml
Max Tube Dimensions (Ø x L mm)	11*38	11*38	11*38	13.5*75	16*86	17*121
Tube Type	Round /Conical bottom	Round /Conical bottom	Round /Conical bottom	Round bottom	Round bottom	Conical bottom

*Haier Biomedical also can provide 0.2ml adapter (sets of 24) (BE12J2003),0.5ml adapter (sets of 24) (BE12JN002) for 1.5/2ml tube rotor




Fixed-Angle Rotor



BE No.	BE12CD000	BE12DD000	BE12DLZ00	BE12DPZ00	BE12DMZ00	BE12DNZ00
Type	Sealed	Sealed	Sealed	Steel sleeve	Steel sleeve	Steel sleeve
Max Capacity	6*50ml	6*50ml	12*8*0.2ml	18*15ml	6*50/15ml	6*100ml
Max RCF (xg)	15,616	16,421	14,891	3,577	3,577	3,348
Max Speed (rpm)	12,000	12,000	12,000	5,000	5,000	4,800
Tubes per Rotor	6	6	12	18	6 pcs(50ml) 6 pcs(15ml)	6
Tube						
Max Tube Capacity (ml)	50ml	50ml	0.2ml 8-strip PCR	15ml	50(15)ml	100ml
Max Tube Dimensions (Ø x L mm)	29*105	29*118	6*18	17*121	29*118 17*121	41*120
Tube Type	Round bottom	Conical bottom	PCR	Round /Conical bottom	Round /Conical bottom	Round bottom

Adapter(Sets of 6) for BE12DD000

BE No.	BE12JC002
Max Capacity (ml)	15
Tube	
Max Tube Dimensions (Ø x L mm)	17*121
Tube Type	Conical bottom





Swing-Out Rotor



Swing-Out
Rotor Block




BE No.	BE12FD001
Max. RCF (xg)	3,347
Max. speed (rpm)	4,600




Bucket
(Sets of 4)



BE No.	BE12H1000
Max Capacity	5*10ml
Tubes per bucket/rotor	5/20
Tube	
Max Tube Dimensions (Ø x L mm)	16*106
Tube Type	Large blood collection tube (Ø16mm)

Adapter (Sets of 50) for BE12H1000

BE No.	BE12JN001
Max Capacity (ml)	5
Tube	
Max Tube Dimensions (Ø x L mm)	13*75
Tube Type	Small blood collection tube



Swing-Out
Rotor Block




BE No.	BE12FD001
Max. RCF (xg)	3,347
Max. speed (rpm)	4,600



Bucket
(Sets of 4)



BE No.	BE12H2000
Max Capacity	2*15ml
Tubes per bucket/rotor	2/8
Tube	
Max Tube Dimensions (Ø x L mm)	17*121
Tube Type	Conical bottom



Swing-Out Rotor



Swing-Out
Rotor Block



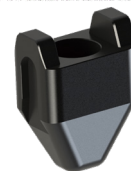
BE No. BE12FD001

Max. RCF (xg) 3,347

Max. speed (rpm) 4,600



Bucket
(Sets of 4)



BE No. BE12H3000

Max Capacity (ml) 50

Tubes per
bucket/rotor 1/4

Tube

Max Tube Dimensions
(Ø x L mm) 29*118

Tube Type Conical bottom



Swing-Out
Rotor Block



BE No. BE12FD001

Max. RCF (xg) 3,347

Max. speed (rpm) 4,600



Bucket
(Sets of 4)



BE No. BE12G7000 BE12J1004

Max Capacity (ml) 100 NA

Bucket Type Flat bottom NA

Adapter(Sets of 4) for
BE12G7000



BE No.	BE12JU003	BE12JV003	BE12JW003	BE12JX003	BE12JY003	BE12JZ003	BE12J0004
Max Capacity	100ml	50ml	2*15ml	15ml	4*10ml	4*5/7ml	4*1.5/2ml
Tubes per adapter/rotor	1/4	1/4	2/8	1/4	4/16	4/16	4/16
Tube							
Max Tube Dimensions (Ø x L mm)	41*120	29*118	17*121	17*121	16*106	13*75/106	11*38
Tube Type	Round bottom	Conical bottom	Conical bottom	Conical bottom	Large blood collection tube(Ø16mm)	Short/longblood collectiontube	Round/Conical bottom



Swing-Out Rotor



Swing-Out
Rotor Block



BE No. BE12FD001

Max. RCF (xg) 3,347

Max. speed (rpm) 4,600



BD CPT tube bucket
(sets of 4)



BE No. BE12G6000

Max Capacity (ml) 8

Tubes per
bucket/rotor 1/4

Tube

Max Tube Dimensions
(Ø x L mm) 16*130

Tube Type Round bottom

BE No. BE12FC001

Max. RCF (xg) 2,245

Max. speed (rpm) 4,500

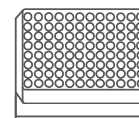
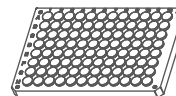
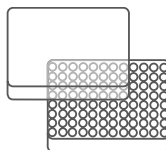
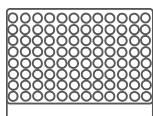
Max Capacity 2 plates

Bucket Type Rectangular bottom



Plate Swing-Out Rotor

Plates for
BE12FC001



Plates per rotor

2

2

2

2

W*D*H (mm)

128*86*15

128*86*17.5

128*86*20

128*86*44.5

Plate Type

MTP
(without lid)

MTP
(with lid)

PCR plate
96-fold

DWP