

# -40°C Chest Biomedical Freezer



DW-40W138J/255J/380J

## Scope of Application :

This product is designed to store vaccines, blood plasma and many other biological materials. Suitable for scientific research institutes, blood stations, hospitals, centers for disease control and prevention, and material science, electronics and chemical laboratories.

## Innovative Design

- ◎ Energy saving hydrocarbons
- ◎ Superior insulation performance
- ◎ Multiple alarms
- ◎ Safe and reliable

### Qingdao Haier Biomedical Co., Ltd.

No.280 Feng Yuan Road, High-tech Zone,  
Qingdao, 266111, P.R. China  
E-mail: [inquiry@haierbiomedical.com](mailto:inquiry@haierbiomedical.com)  
Website: [www.haiermedical.com](http://www.haiermedical.com)



Mar, 2026



Haier Biomedical



Haier Biomedical  
International



Haier Biomedical  
International



Haier Biomedical  
International



Haier Biomedical  
International

## Product Advantages



### Temperature Control

- Microcomputer control, digital temperature display, display precision is 0.1°C. Adjustable temperature set point -20°C--40°C
- User settable temperature alarms



### Refrigeration System

- Durable, market-leading brand compressors and EBM condensing fan ensure a high refrigeration efficiency and maximizes temperature performance
- High density insulation layer delivers superior insulation performance
- Evaporator and condenser design delivers excellent refrigeration efficiencies
- Non-toxic, environmentally-friendly hydrocarbon refrigerants



### Safety System

- Multiple alarms: high/low temperature alarm/sensor error alarm/power failure alarm. Optional high ambient warning and remote alarm contacts
- Battery backed-up alarm will alert for more than 24 hours in case of power failure
- Equipped with overcurrent protector for safety

## Ergonomic Design



The safety door lock is designed to prevent unintended access.



The  $\Phi$  25mm porthole is configured for easy access for monitoring and other test probes.



Equipped with 4 universal casters with brake design, easy to move and fix in place.



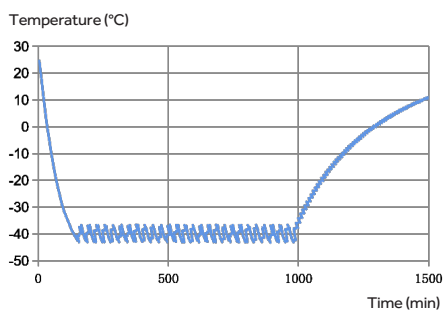
Optional remote alarm terminal



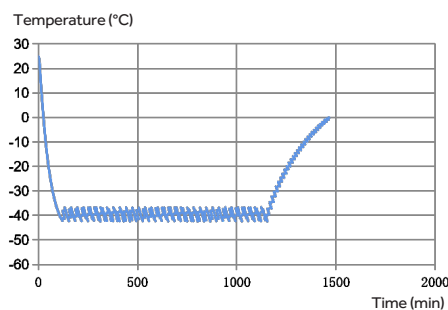
Optional RS485 or USB port (either-or)

## Typical Performance Characteristics

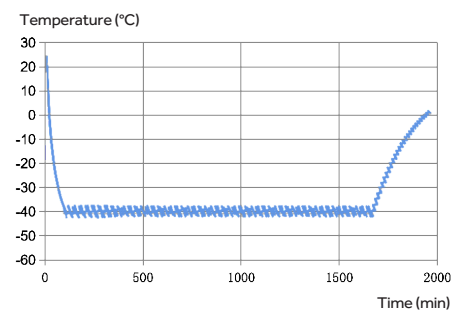
DW-40W138J



DW-40W255J



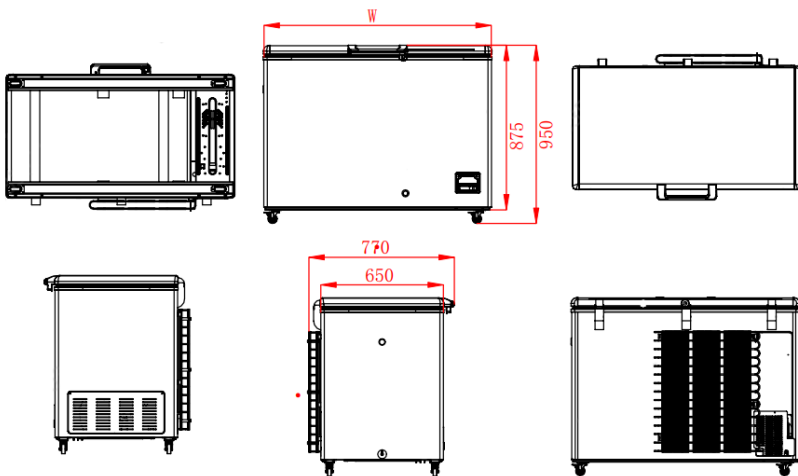
DW-40W380J



## Product Parts Diagram



## Product Dimension Drawings



Specification		W
Model		
DW-40W138J		790mm
DW-40W255J		1210mm
DW-40W380J		1655mm

## Specifications



Model		DW-40W138J	DW-40W255J	DW-40W380J	
Technical Data	Cabinet Type	Chest	Chest	Chest	
	Climate Class	SN N	SN N	SN N	
	Cooling Type	Direct cooling	Direct cooling	Direct cooling	
	Defrost Mode	Manual	Manual	Manual	
	Refrigerant	HC	HC	HC	
	Sound Level (dB(A))	42	42	42	
Performance	Cooling Performance (°C)	-40	-40	-40	
	Temperature Range (°C)	-20--40	-20--40	-20--40	
Control	Controller	Microprocessor	Microprocessor	Microprocessor	
	Display	LCD	LCD	LCD	
Electrical Data	Power Supply (V/Hz)	220-240/50	220-240/50	220-240/50	
	Power (W)	260	370	450	
	Electrical Current (A)	2.3	3.1	2.9	
Dimensions	Capacity (L/Cu.Ft)	138/3.9	255/9.0	380/13.4	
	Net/Gross Weight (approx)	kg	52/65	76/96	90/115
		lbs	114.6/143.3	167.5/211.6	198.4/253.5
	Interior Dimensions (W*D*H)	mm	580*445*620	1000*445*620	1450*445*620
		in	22.8*17.5*24.4	39.4*17.5*24.4	57.1*17.5*24.4
	Exterior Dimensions (W*D*H)	mm	790*770*950	1210*770*950	1655*770*950
		in	31.1*30.3*37.4	47.6*30.3*37.4	65.2*30.3*37.4
	Packing Dimensions (W*D*H)	mm	815*800*990	1255*800*990	1695*800*990
		in	32.1*31.5*39	49.4*31.5*39	66.7*31.5*39
Container Load (20'/40'/40'H)		28/56/56	22/46/46	14/28/28	
Alarms	High/Low Temperature	Y	Y	Y	
	Remote Alarm	Optional	Optional	Optional	
	Power Failure	Y	Y	Y	
	Sensor Error	Y	Y	Y	
	High Ambient Temperature	Optional	Optional	Optional	
Accessories	Caster	Y	Y	Y	
	Porthole	Y	Y	Y	
	USB Interface/RS485	Optional (USB or RS485, either-or)	Optional (USB or RS485, either-or)	Optional (USB or RS485, either-or)	
Others	Certificate	CE	CE	CE	

\*Haier Biomedical reserves the right to change products and specifications without prior notice.