

Mini-Centrifuge



Application

This product is used in micro centrifugal scenarios (single tube capacity is less than or equal to 2ml)

Applicable Users

- PCR laboratory
- Scientific research biology laboratory in colleges and universities
- Public health and disease control
- Microbiological laboratory
- Chemistry and chemical laboratory
- Medical treatment and hospital testing room

Qingdao Haier Biomedical Technology Co., Ltd.

No.280 Feng Yuan Road, High-tech Zone,
Qingdao, 266111, P.R. China
E-mail: inquiry@haierbiomedical.com
Website: www.haiermedical.com



Haier Biomedical
International



Haier Biomedical
International



@haiermedicalint



Haier Biomedical
International



Haier Biomedical
International

Product Advantages



LX-120T2Z



LX-50T2Z



Quiet

Suspension with shock absorber reduces noise output



Convenient

Simple and fast operation



Small

Can be held in your hand



Safe

- Safety interlock lid with automatic shut-off if lid is open
- Anti vibration & absorption suction cup
- Splash and leak protection

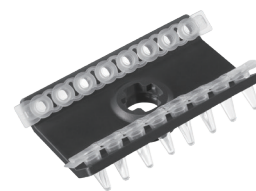
Specifications





Model	LX-120T2Z	LX-50T2Z
Maximum Capacity	8*1.5/2 ml	8*1.5/2 ml
Max Speed (rpm)	12,000	5,000
Max RCF (xg)	7,325	1,270
Time Setting Range	10s-99m50s	-
Display	OLED	-
Noise (dB(A))	≤50	≤40
Power Supply (V/Hz)	100-240/50/60	100-240/50/60
Power (W)	35	25
Exterior Dimensions (W*D*H)(mm)	152*142*122	152*142*122
Net Weight (kg)	1.2	1.2
Packing Dimensions (W*D*H)(mm)	265*205*200	265*205*200
Gross Weight (kg)	3	3

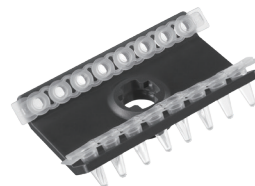
Laboratory centrifuges contain fluorinated greenhouse gases in the sealing equipment.



LX-120T2Z Rotor List



Type	Fixed-Angle Rotor	Fixed-Angle Rotor
Max Capacity	8*1.5/2 ml	2*8*0.2 ml
Max RCF (xg)	7,325	6,225
Max Speed (rpm)	12,000	12,000
Tubes per Rotor	8	2
Tube		
Max Tube Capacity(ml)	1.5/2	0.2 8-strip PCR
Max Tube Dimension (Ø x L mm)	11*38	6*18
Tube Type	Round/Conical bottom	PCR



LX-50T2Z Rotor List



Type	Fixed-Angle Rotor	Fixed-Angle Rotor
Max Capacity	8*1.5/2 ml	2*8*0.2 ml
Max RCF (xg)	1,270	1,150
Max Speed (rpm)	5,000	5,000
Tubes per Rotor	8	2
Tube		
Max Tube Capacity (ml)	1.5/2	0.2 8-strip PCR
Max Tube Dimension (Ø x L mm)	11*38	6*18
Tube Type	Round/Conical bottom	PCR

Adapter (Sets of 24) for 1.5/2ml Fixed-angle rotor



BE No.	BE12J2003	BE12JN002
Max Capacity (ml)	0.2	0.5
Tube		
Max Tube Dimensions (Ø x L mm)	6.3*23	8*35
Tube Type	Conical bottom	Conical bottom